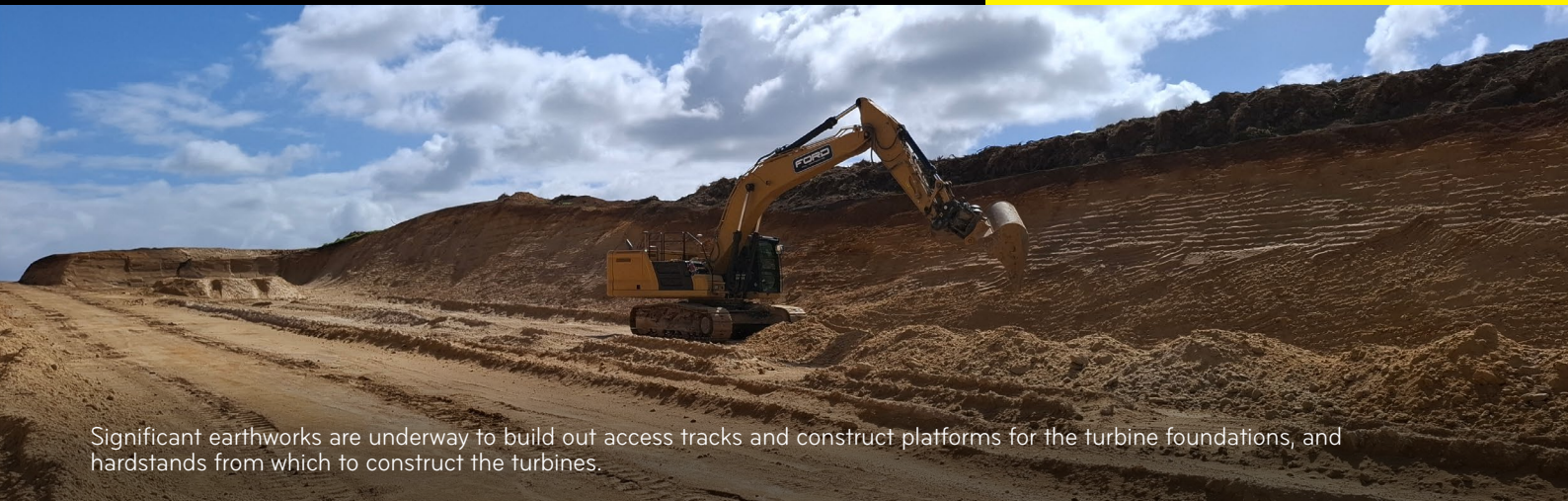


# KAIWAIKAWE WIND FARM.

May 2025 Newsletter.



Significant earthworks are underway to build out access tracks and construct platforms for the turbine foundations, and hardstands from which to construct the turbines.

## WELCOME.

Welcome to this newsletter for Mercury's Kaiwaikawe wind farm. We put these out every few months to keep you up to date with what we're doing up through the wind farm build.

Please forward this to anyone who might be interested. They can join our distribution list for future updates on [kaiwaikawewindfarm@mercury.co.nz](mailto:kaiwaikawewindfarm@mercury.co.nz).



## PROJECT UPDATES.

- We officially 'broke ground' with a ceremony on 27 March. Pictured top right: local MP Grant McCallum, Mercury CE Stew Hamilton, Mercury Board chair Scott St John, Energy Minister Simon Watts, Te Roroa GM Snow Tane, Pamu GM Andrew Sliper.
- The site compound and facilities are established adjacent to Pamu's farm buildings (right mid picture).
- Foundation pads for the on-site substation and Operations & Maintenance building have been constructed - these will remain as part of the operating wind farm (right bottom picture).
- The project is on track to receive the first turbines next autumn, with first generation mid next year and completion by end 2026.



Works to improve the corner and sightlines on Conns Hill, SH14

## GETTING THE BIG LOADS THROUGH

The parts to build the huge structures on this wind farm are being shipped into Northport at Marsden Point and will then be transported by road to the site.

NZ Transport Agency Waka Kotahi is carrying out bridge strengthening work on SH14 (Awakino and Tangiteroria bridges). We are also working on building out some of the tighter corners to allow long loads to travel the route – with the knock-on benefit of improved sightlines for drivers.

## GETTING THE POWER OUT TO THE GRID AND BEYOND

We're working with local construction partners Northpower on this project.

The wind farm will connect to Northpower's substation near Dargaville, and then on to the national grid at Maungatapere. In addition to constructing the transmission line connecting the wind farm to the grid, Northpower are upgrading their Dargaville and Maungatapere substations and the lines between to handle the increased power flow.



## COMMUNITY INFO-SHARE

We've heard that there's a lot of interest and questions about what's going on up SH14.

We're delighted to invite everyone to drop by the Lion's Centre, Hokianga Road, Dargaville from 2pm to 5.30pm on Thursday 12 June.

Please help us spread the word, we hope to see a lot of you and we're ready to answer all your questions.

Due to the sheer size of the wind turbine equipment, careful planning and multiple oversized transport trips are required to get them to site. Northpower will also be modifying (raising, putting underground or shifting) around 190 power line road crossings between Northport and site to allow the oversize transport loads to be successfully delivered.

Northpower's work on the transmission line will reach Babylon Coast Road in June/July. Thank you for your patience as this will mean some shut-downs so that they can complete sections of line at a time. You can expect Northpower to be in touch with you in advance if this is going to impact you.

Read more:

- **Northpower:** [northpower.nz/case-study/mercurys-kaiwaikawe-wind-farm](https://northpower.nz/case-study/mercurys-kaiwaikawe-wind-farm)
- **NZ Transport Agency Waka Kotahi:** [nzta.govt.nz/media-releases/spotlight-on-sh14-works-update](https://nzta.govt.nz/media-releases/spotlight-on-sh14-works-update)



## COMMUNITY CONSULTATIVE GROUP

A Community Consultative Group has been established as one way to stay in touch with the communities around the wind farm. This Group has been set up to make sure that there is information flow between Mercury and the community, and it will be an on-going point of contact and a forum for letting us know any community concerns. We meet quarterly, and put out this Newsletter following that discussion.

If you have questions or concerns please let us know directly: [kaiwaikawewindfarm@mercury.co.nz](mailto:kaiwaikawewindfarm@mercury.co.nz)



For more information, or to provide any feedback, please visit: [mercury.co.nz/kaiwaikawe](https://mercury.co.nz/kaiwaikawe) or email: [kaiwaikawewindfarm@mercury.co.nz](mailto:kaiwaikawewindfarm@mercury.co.nz)