

KAIWAIKAWE WIND FARM

March 2026 Newsletter

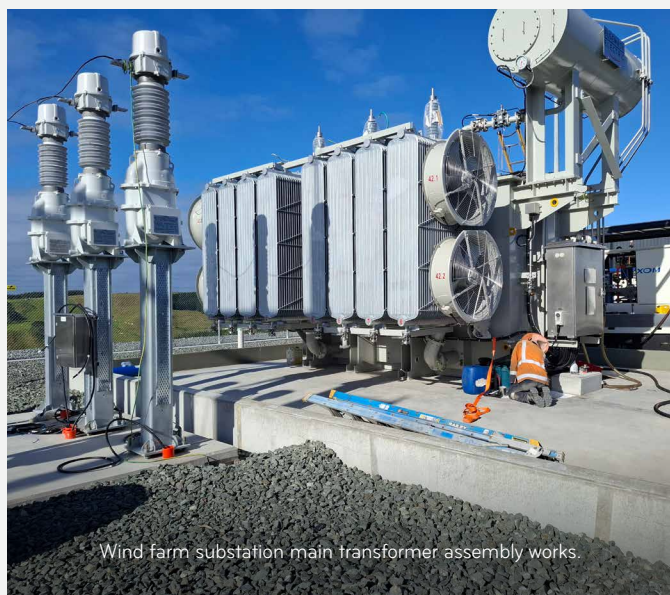


Dawn on day 1 of the transport convoys, the first blade reaches site.

WELCOME

Welcome to this newsletter for Mercury's Kaiwaikawe wind farm. We put these out every few months to keep you up to date with what we're doing up through the wind farm build.

Please forward this to anyone who might be interested. They can join our distribution list for future updates on kaiwaikawewindfarm@mercury.co.nz



Wind farm substation main transformer assembly works.

PROGRESS ON SITE...

Out of 12 turbines as 10.03.2026

BELOW GROUND	
Wind turbine sites excavated	12/12
Anchor cages to attach the towers installed	12/12
Foundation concrete pours complete	12/12
Foundations backfilled	12/12

CONSTRUCTION UNDERWAY

Towers installed	0/12
Blades installed	0/12
Wind turbine complete	0/12
Operation & Maintenance Building and workshop	COMPLETE
Concrete plant decommissioned and removed from site	COMPLETE
Sub-station	IN PROGRESS
Transmission line	95%

The project changed gear this year, with the works at ground level and below nearing completion. Huge thanks to our key contractors Higgins and ElectroNet and their team of sub-contractors (including locals Midgley Developments and Huband Contractors) for sorting the earthworks, cabling, internal roading, and foundations.

Our turbine supply and installation contractor Vestas is now on site to build the wind turbines. We're on track for first generation this winter, and full generation by end of this year.

OFF SITE WORKS AND TRANSPORT

We are focusing on continued safe sharing of the road as the components come to site with a 30km/ hour speed limit in place for site traffic on the roads in to site.

In addition, summer came in all its dusty glory, and we have applied dust lock to the road in problem areas and near homes. We are also utilising a water cart in advance of turbine component deliveries.

Northpower are nearing completion of their epic build and update to the transmission infrastructure to carry the new power out in to the Grid. Sections of lines were put up (strung) by helicopter where the ground conditions would not support a ground-based operation.

And thanks to Northpower also for their ongoing work modifying the power lines and upgrading the Dargaville substation to handle the increased power flow that will be generated by the new wind farm.

Getting the kit to site

We've been blown away by the interest in the trucks and trailers and their loads. We get pretty excited about this and it's fantastic to see that many of you do too.

We've had a lot of questions about when the loads will move, especially the blades.

Here's what we know:

- We're moving the parts to build the five turbines in the southern section of the site first, so they will be coming in via Babylon Coast Road entrance. (Local residents, thank you for your patience - after these have been delivered in the coming weeks, there will be far less heavy traffic on that road)
- It's planned to bring the parts to build one turbine each week. Each turbine it will take 11 loads (2 or 3 per day). The 11 loads make up the five tower sections, three blades and one each of nacelle, hub, and powertrain. We'll also bring shipping containers of the tools and smaller parts.
- The trucks all move at night, to limit impact on other road users. Our trucks won't be on the road between 6.30am and 9am each day, or on the weekend. They will head back to port unloaded during the day, and these unloaded truck movements will have significantly less potential impact as they will be closer to usual road speeds.
- They're very very big. We've had to put "no parking" signs on River Road and outside the Caltex in Dargaville – thank you for helping us keep a clearway around some of these corners.



The first and second tower sections are installed by crane on the southernmost wind turbine.

- The road works to prepare for these convoys will leave a legacy of better sight lines on corners and widened roads.

And here's what we are not able to confirm in advance:

- Our contractor Vestas, that is installing the turbines, and their subcontracted haulage companies schedule deliveries based on a number of factors, so it's not possible to confirm in advance what is being delivered, and when it might pass a certain part of the route.

IN THE COMMUNITY

Thanks to the Dargaville Friendship Club for living up to their name and making us very welcome last month. A great discussion of our progress on the wind farm, and renewable energy in general, and a lovely morning tea.

Tell us your concerns, ask us your questions! We rely on your feedback to our email (see below) or directly if you see us around town.

Another way that we find out what community concerns and questions are, are through a small group of local people who meet with us quarterly (the Community Consultative Group). This group includes neighbours from the area we're building in, and representatives from Kaipara District Council, Te Roroa and DOC.

WE'RE IN THE NEWS

Shout out to local journalists helping tell the story. Looking at you, [Northern Advocate](#), and Kaipara Lifestyler.

GETTING IN TOUCH

If you have questions or concerns please let us know kaiwaikawewindfarm@mercury.co.nz