



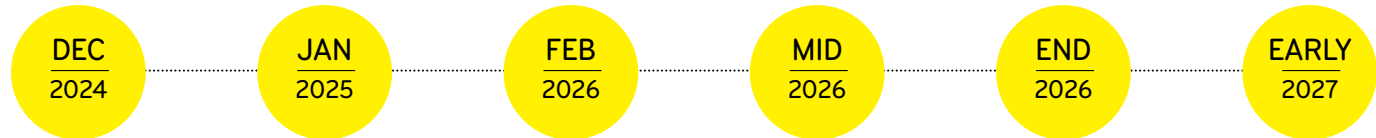
KAIWAIKAWE WIND FARM.

We have confirmed construction of a \$287m wind farm in Northland, bringing Mercury's total commitment to new renewables to more than \$1b in just over two years.

Kaiwaikawe Wind Farm will be located 12km north-west of Dargaville and 3km inland from the Tasman Sea. It will connect to Northpower's substation near Dargaville via a ~14km 66kV transmission line.



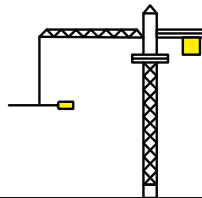
For more information, please visit: mercury.co.nz/kaiwaikawe-wind-farm or email: kaiwaikawewindfarm@mercury.co.nz



NOTICE TO PROCEED.



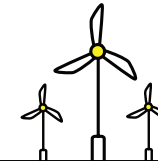
SITE MOBILISATION AND CONSTRUCTION COMMENCES.



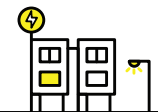
WIND TURBINE INSTALLATION BEGINS.



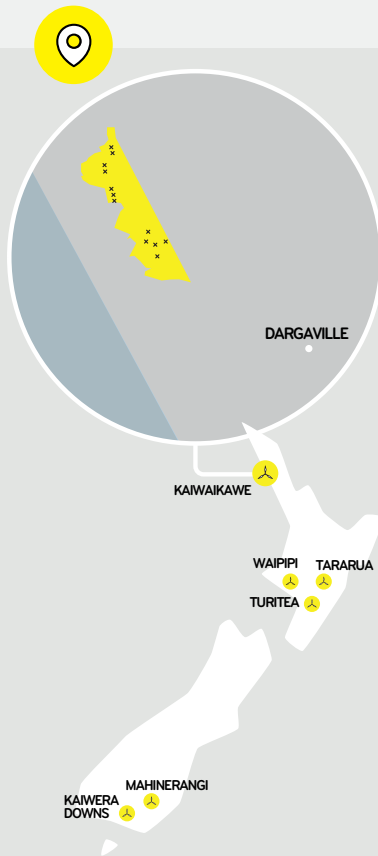
SUBSTATION LIVENING AND FIRST GENERATION.



FULL GENERATION.



PROJECT COMPLETE.



TURBINE & GENERATION DETAILS.

Number of turbines: 12.

Turbine type: Vestas V162, 6.4MW.

Turbine tip height: 206m.

Turbine hub height: 125m.

Rotor diameter: 162m.

Installed capacity: 77MW.

Electricity generation: Approx. 221 GWh per annum - the equivalent to about 27,000 homes.



LOOKING AFTER THE ENVIRONMENT.

Resource consents require thorough consideration of impacts to the environment and include comprehensive mitigation and monitoring programmes.

Measures include:

Ensuring our construction effects are managed through best practice erosion and sediment control preventing the sedimentation of water ways and wetlands on the site.

Environmental enhancement initiatives to improve the habitat for wetland birds in the area. The local bittern population is the primary focus of our environmental monitoring. We have established a Bittern Fund to support conservation activities.

Animal and plant pest control on site. We're working with independent ecologists to minimise disruption to the environment during construction.



COMMUNITY ENGAGEMENT.

Planning and Consenting Stage: Engaged extensively with local landowners, iwi and interested groups.

Community Consultative Group: Established as an ongoing point of contact for local residents. Facilitates information flow between Mercury and the community.

Community Fund: An annual fund of \$30,000 to support local groups and projects in the community. This will be developed with input from the Community Consultative Group. The fund will open for business mid 2025 and operate for the life of the wind farm.

Timeline schedule as of December 2024.