

KAIWAIKAWE WIND FARM.

February 2025 Newsletter.



We are so pleased to be on site and building this wind farm. Works began with a site blessing at dawn on 13 January, with Thomas Hohaia, Sharon Murray, Mandy White and Manual Te Rore from Te Roroa as well as attendees from Pamu farms and our contractors Higgins and Midgley Developments.

WELCOME.

Welcome to the first newsletter for Kaiwaikawe wind farm. We'll put these out every few months to keep you up to date with what we're doing throughout the wind farm build.

Please forward this to anyone who might be interested. They can join our distribution list for future updates on kaiwaikawewindfarm@mercury.co.nz.

TRAFFIC MANAGEMENT.

Our priority is to keep everybody safe. We have traffic management measures in place including a 50km/h speed restriction for all wind farm traffic. A Construction Traffic Management Plan was hand-delivered to letterboxes around the wind farm site. If you would like to be emailed a Plan, let us know (kaiwaikawewindfarm@mercury.co.nz).

Or get in touch with us on 0800 963 976 (0800 WND FRM) if you have any questions or concerns about this work.



WHO IS DOING THE WORK?

This complex project takes a big team (at the height of construction there will be up to 100 people on site each day). Mercury is really proud to have put together an A-team of contractors and sub-contractors to help us build this wind farm.

The team from Higgins are on site every day. They are the civil contractor on site building the roads and foundations for the turbines. From May, ElectroNet will be joining them to build the substation and install the reticulation cabling from each turbine. Northpower is constructing the transmission line connecting the wind farm to the grid. Once the foundations are ready, the Vestas team will get involved and construct the huge turbines (this is planned to start in about a year).

Seeing more utes around town? Sub-contractors currently working on the project include:

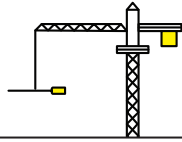
- **Colquhoun Construction** (civil works and construction)
- **Ford Civil** (civil works and construction)
- **Midgley Developments** (civil works and construction)
- **Huband Contractors** (roading, drainage and on-site works and metal supplies)

JAN
2025



Site mobilisation and construction commences.

FEB
2026



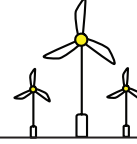
Wind turbine installation begins.

MID
2026



Substation livening and first generation.

END
2026



Full generation.

EARLY
2027



Project complete.

KEY PROJECT FACTS.

Installed capacity	77 MW	Tower height	125m
Annual production	221 GWh/yr	Blade height	206m
Wind turbine type	Vestas V162 – 6.4MW	Rotor diameter	162m
Number of turbines	12		

FREQUENTLY ASKED QUESTIONS.

Where is the wind farm going to be built?

The wind farm will be built between Dargaville and Omamari on Pamu farmland west of SH12.

Who will be operating the wind farm?

Tararua Wind Power Limited, a fully owned subsidiary of Mercury will own and operate the wind farm once operational. Mercury are an owner, operator and developer of renewable generation assets across New Zealand, primarily consisting of wind, geothermal and hydro projects. Our contractor Vestas will look after the turbines on the ground.

Are turbines noisy?

Modern wind turbines make relatively little noise. The level of sound varies depending on the shape of the land, the position of the listener and the speed of the wind. The sound that a modern wind turbine produces is most commonly described as a cyclic whooshing or swishing sound.

Extensive assessments are undertaken through the design of the project to ensure that noise will not negatively impact on residents. Mercury will continue monitoring throughout the operation of the wind farm to ensure that it is meeting the required standards.

COMMUNITY CONNECTION.

Mercury is a part of many communities around our wind farms and power stations and we want to be a 'good neighbour'. To start to support and get involved with the great work going on around here we will set up an annual community fund of \$30,000. Look out for further details on this in coming months.

Your feedback is welcome if you have any concerns or believe you can provide local insight into matters which we should address.

A Community Consultative Group has been established as one way to stay in touch with the communities around the wind farm, with transparent and open communication. This Group's objective is to make sure that there is information flow between

Mercury and the community, and it will be an on-going point of contact for the community. The first group meeting will be in April.

TREES THAT COUNT.

We've made a donation to Trees That Count for tree planting in local areas. This is to plant new trees (lots of them) to 'replace' any that need to be taken out to build this wind farm (and it's been designed so there aren't many).



For more information, or to provide any feedback, please visit: mercury.co.nz/kaiwaikawe or email: kaiwaikawewindfarm@mercury.co.nz