

PLAN YOUR JOURNEY

We are making significant enhancements to the Arapuni Hydro Dam. For safety, we will need to close Arapuni Road across the dam from June/July 2026 for 24-36 months. A temporary diversion route along Powerhouse Road will be for local, essential travel only. All trucks to use alternative route via Tamahere.

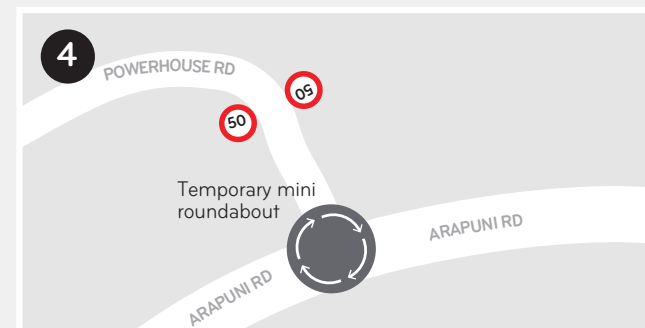
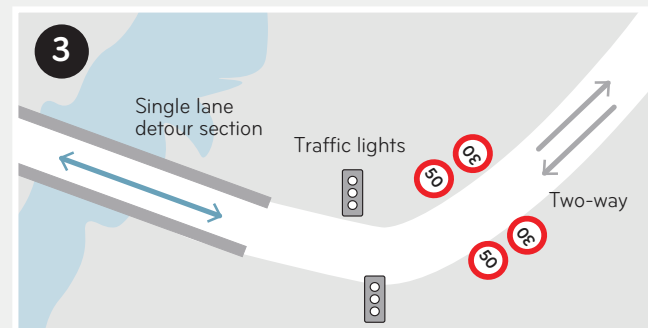
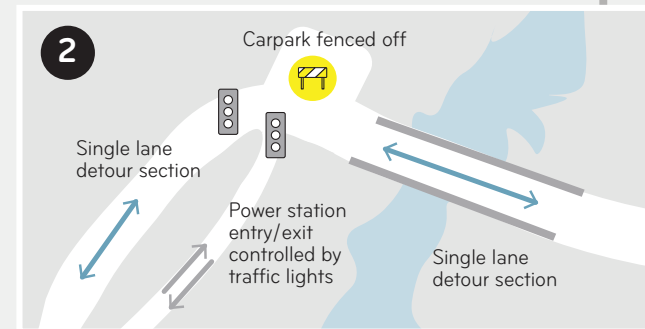
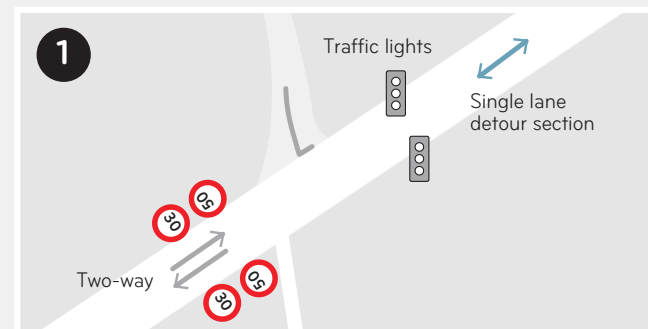
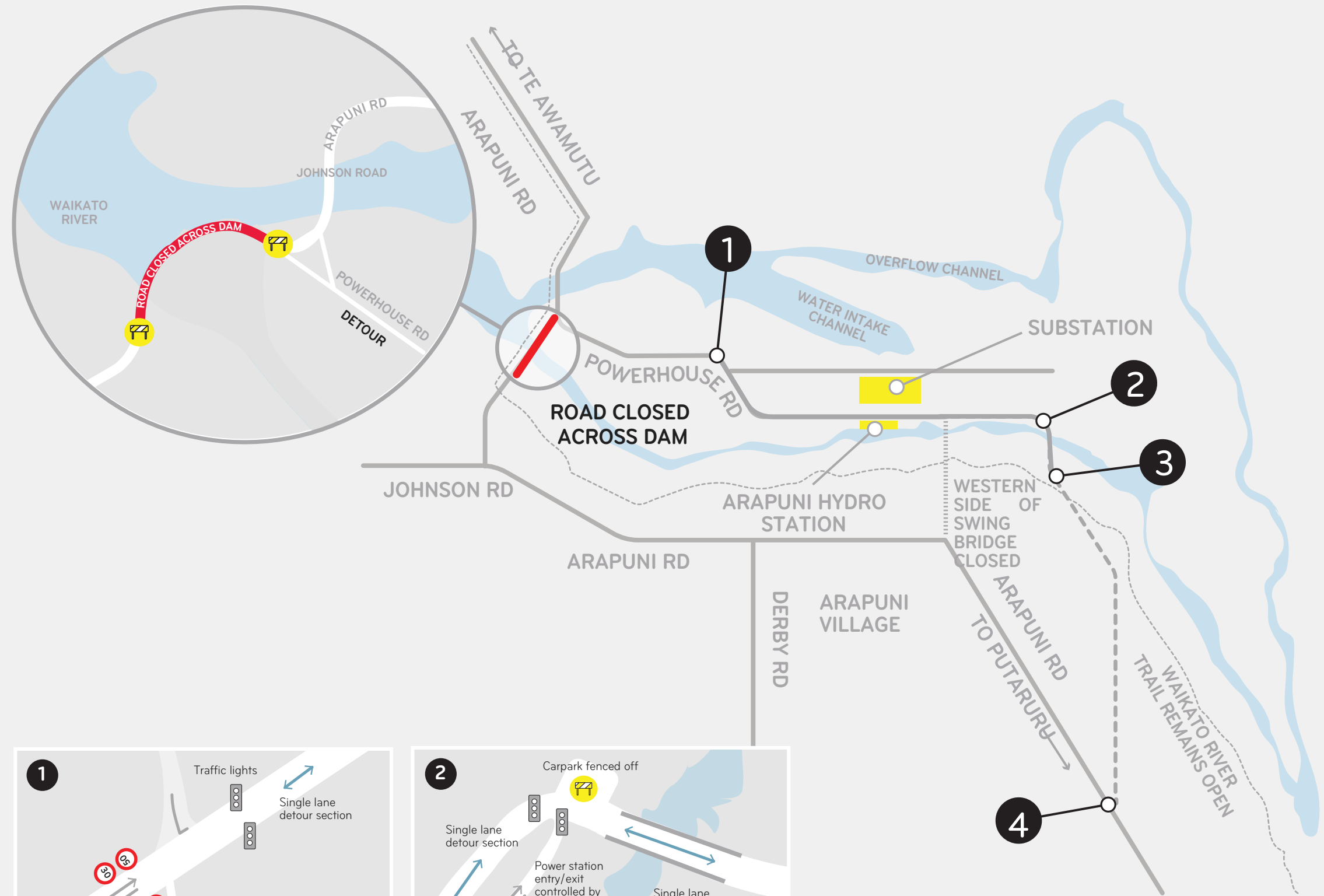


Scan or click for up to date NZTA travel info.



Scan or click to find out more about this project.

Visit our website at:
mercury.co.nz/arapuni-dam-remediation-work
 or email us on:
project.arapuni@mercury.co.nz



KEY:

- DETOUR
- SINGLE LANE DETOUR UNDER TRAFFIC LIGHT MANAGEMENT
- WATER
- WAIKATO RIVER TRAIL