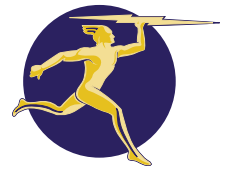


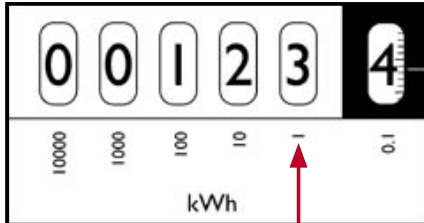
# Meter Reading



Mercury Energy

## A GUIDE TO READING YOUR METER

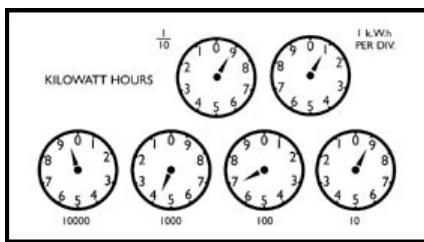
### DIGITAL METERS



1. Read your meter numbers starting from the left.
2. Read to the unit 1 only. Don't read any digits after a decimal point (i.e. Don't take into account the 0.1 unit).
3. Don't read any digits marked in red.

So in this example the reading is 00123.

### CLOCK DIAL METERS



This reading is 94 690.

When reading Clock Dial meters, you ignore the 1/10 unit (this is usually marked in red). You need to read the 5 remaining units from left to right. Start at unit 10,000 and finish at unit 1/kWh per day.

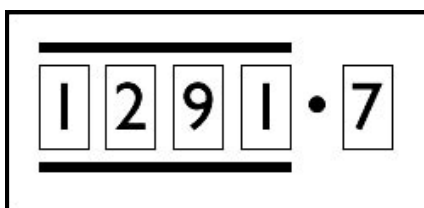
Two important rules:

1. When the hand is in between two numbers **write down the lower number**.
2. When the hand is on a number, write down the number **before** the one it is on.

**Special note:** You will need to check the very next right hand unit, if this one's hand is between 0 and 1 you will need to write down the **actual** number the hand is on (not the one before).

If you can't get the hang of this, please just draw a copy of the hand positions on the dials onto the back of your bill.

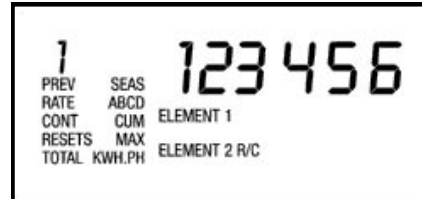
### GAS METERS



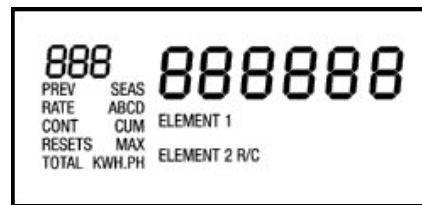
1. Read your meter numbers starting from the left.
2. Read up to the decimal point. Don't read any digits past the decimal point or in red.

In this example the reading is 1291.

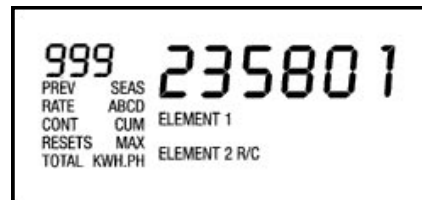
### ELECTRONIC METERS



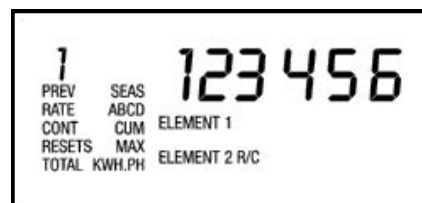
An electronic meter could be in place if your pricing option is based on two separate meter readings. An LCD reading will show you the two readings and a total reading, whether by scrolling automatically (if it is a black meter) or at the push of a button (if it is a beige meter). In an example where the meter measures hot water usage separately from other power usage:



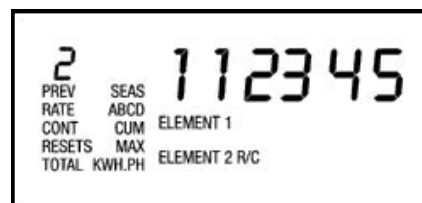
This is a test pattern. You do not read this.



This is the total of both readings. You do not read this (0 will show on the beige meters).



Reading 1 is the units used for electricity other than hot water. **YOU DO READ THIS.** The reading in this example is 123456.



Reading 2 shows units used for hot water. **YOU DO READ THIS.** The reading in this example is 112345.